



Atherton Residential SERVICE GUIDE



RECYCLABLES

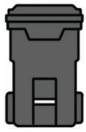


MIXED COMPOSTABLES



YARD TRIMMINGS

BASE SERVICES include:



one (1) 20-, 32-, 64- or 96-gallon **GRAY** carts



+ one (1) **BLUE** cart (default size, 64-gallon)



+ up to two (2) **GREEN** carts (default size, 96-gallon)



CART DIMENSIONS (approximate)

- **20 & 32-gal:** Height - 38 in., Width - 20 in., Depth - 25 in.
- **64-gal:** Height - 43 in., Width - 26 in., Depth - 30 in.
- **96-gal:** Height - 46 in., Width - 28 in., Depth - 34 in.

CART SET-OUT GUIDELINES



Weekly collection requires the use of GreenWaste-issued carts.

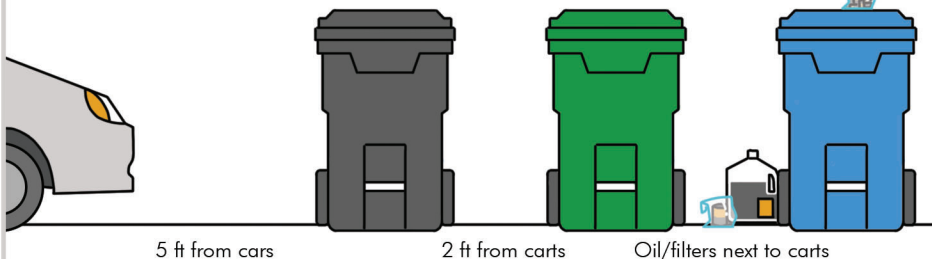


Please set carts out by 6:30am on your service day.



Contents cannot exceed the weight limits listed on the cart or 150 lbs. (whichever is less).

Batteries
on top
of cart



HOLIDAYS



COLLECTION SCHEDULE

Collection will not occur on New Year's Day (January 1), Thanksgiving (4th Thursday in November) or Christmas (December 25). If your regular collection day falls on or after one of these holidays, your collection will be moved to the next day.



HOLIDAY TREES

On service day, place unornamented trees (cut to no longer than six (6) foot lengths) curbside, next to your service carts, for Yard Trimmings collection. Trees are collected for no additional charge starting December 26 and continuing until the end of January.

CONTACT US



PHONE: 650.798.5999 (8am – 5pm) Monday - Friday



EMAIL: atherton@greenwaste.com



WEBSITE: greenwaste.com/service_area/atherton

BILL PAY

GreenWaste mails quarterly bills to all customers during the first month of the billing cycle. Payment is due one month from the date the bill is mailed.



BILLING ADDRESS

GreenWaste Recovery
P.O. Box 11089
San Jose, CA 95103-1089



ONLINE BILLING

Visit <https://portal.greenwaste.com> to pay your bill, sign up for e-billing, check your service day, and more!

THE EXTRAS



BACKYARD SERVICE

GreenWaste will collect carts greater than five feet from the accessible roadway for an additional charge.



ON-CALL CLEAN-UPS

GreenWaste will provide up to two On-Call Clean-ups per year at no additional charge. Call Customer Service to schedule collection of up to two cubic yards of material, one bulky item, one large appliance (w/out freon), and one e-waste item.



BULKY ITEM

Bulky items, beyond those included in your On-Call Clean-Up, can be collected for a charge. Call at least 48-hours in advance.



EXTRA MATERIAL

Extra material will be collected and additional charges will apply based on volume & material type. No additional charges will apply for the first 32-gal of extra material each year. All materials must be properly labeled by material type and set Curbside for collection.

- All extras may be placed in a rigid & lidded can (combined <60 lbs.).
- Blue & Gray Cart extras may be placed in secured bags (<30 lbs.).
- Yard Trimmings may be bundled/tied or otherwise secured in a set-out no larger than 3' x 3' x 3'.



EXTRA CARDBOARD

Cardboard must be set out Curbside and secured such that the bundle or box remains intact upon lifting and:

- Flattened & bundled/ tied or otherwise secured (e.g. with twine or tape) in a set-out that is no larger than 3' x 3' x 3', OR
- Cut and placed inside an intact cardboard box and secured in a set-out that is no larger than 2' x 2' x 2'.

COMMUNITY PROGRAMS



TOWN-WIDE ANNUAL EVENT

GreenWaste provides a Town-Wide Annual Event for residents at no additional cost. The event includes the following services:

- Resident drop-off of e-waste
- Confidential document destruction service
- Finished compost distribution

Look for event date and details on the annual GreenWaste-distributed postcard.



MATERIALS RECOVERY

GreenWaste owns and operates a Materials Recovery Facility in San Jose, where all of Atherton's material will be processed. The end results of processing include separated recyclables, landscape compost and OMRI certified compost. Learn more about the facility at www.greenwaste.com.



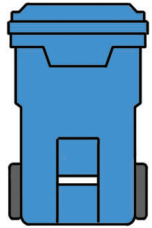
HOUSEHOLD HAZARDOUS WASTE PROGRAM

The County of San Mateo provides the opportunity for residents to dispose of Household Hazardous Waste (HHW) as part of their drop-off program. Learn more at www.smchealth.org/hhw or call 650.372.6200.

The following materials are examples of HHW – do NOT place these materials in your GreenWaste-issued carts.

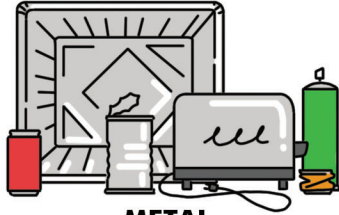
- Auto and brake fluids
- Car batteries
- Fuel tanks
- Grease and cooking oil
- Medications and sharps
- Paints and polishes
- Pesticides and spa chemicals
- Solvents

WHAT GOES WHERE?



RECYCLABLE MATERIALS

ALL MATERIALS MUST BE CLEAN AND DRY



METAL

aluminum foil & trays,
small metal appliances,
food & beverage cans,
empty aerosol cans

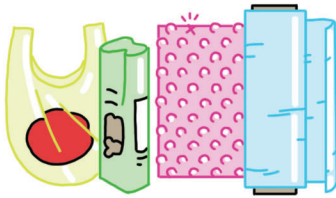


PAPER

cardboard & boxes,
newspaper & magazines
clean cartons,
paper & junk mail



*ITEMS MUST BE BUNDLED & KNOTTED



FILM PLASTIC*

bags (bread, produce, etc.),
bubble wrap,
case & shrink wrap



PLASTIC

bottles (caps on),
food containers,
take-out containers,
buckets, baskets



†E-WASTE IS "BULKY ITEM" IF OVERSIZED OR CONTAINS MERCURY/LEAD



E-WASTE†

small appliances,
laptops, tablets,
printers, scanners,
cell phones, cameras



GLASS

beverage bottles,
food jars,
cook/dishware, ceramics,
mirrors, windows



MIXED COMPOSTABLES



PAPER

soiled paper & cartons,
napkins, paper towels,
photographs,
waxed paper & cardboard



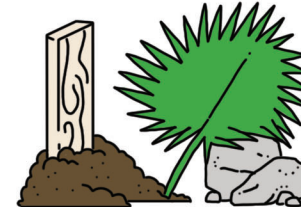
PLASTIC

coffee cup lids,
compostable plastic,
gloves,
hoses, pvc pipe



FOOD WASTE

meat, poultry, bones,
dairy products, eggs,
coffee grounds, filters,
fruit, vegetables, grains



OUTDOOR WASTE

dirt, soil, ashes,
palm fronds, pampas grass,
bamboo, rocks,
wood waste

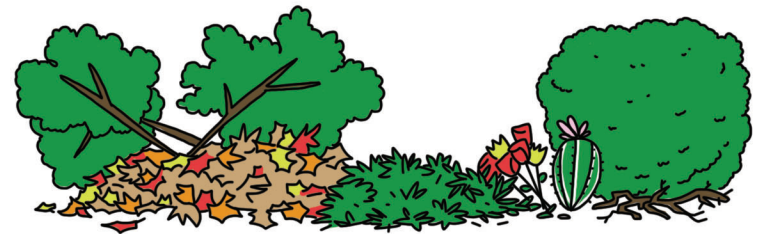


MISCELLANEOUS

styrofoam/polystyrene,
snack packaging,
fabric, textiles, diapers,
kitty litter, pet waste



YARD TRIMMINGS



YARD TRIMMINGS

branches, trimmings,
flowers, shrubs,
grass clippings,
cactus, flax, ivy