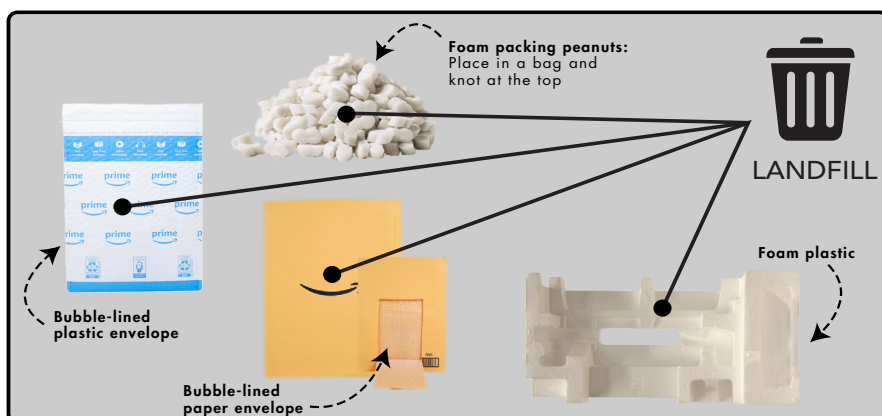
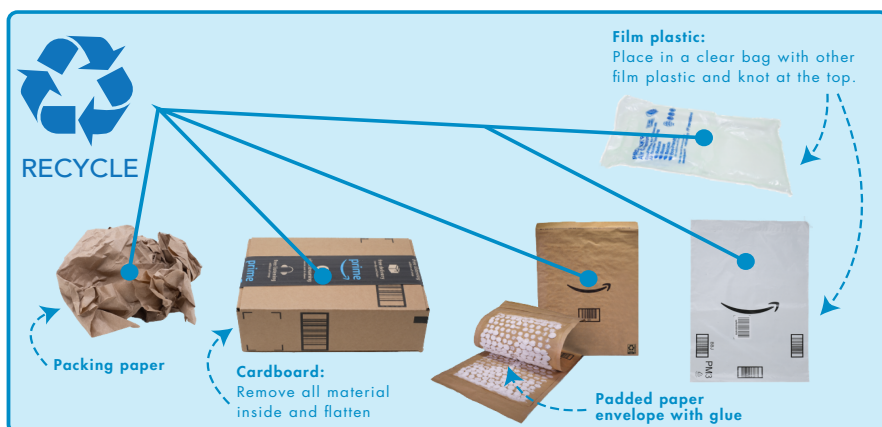


GreenWays

THE QUARTERLY RESIDENTIAL NEWSLETTER FROM GREENWASTE OF PALO ALTO WINTER 2022

WHAT PACKAGING IS RECYCLABLE?

Products ordered online are often delivered with excessive amounts of packaging material especially during the holidays. To ensure packaging materials go into the correct cart, follow these general guidelines:



To reduce packaging waste from online orders:

- Request that your items are shipped together.
- Shop from companies that offer "frustration free" packaging or use only recyclable packaging materials.
- Request the company to limit packaging for your order.

GREENWASTE HIGHLIGHTS



- **CHRISTMAS TREE COLLECTION:**
For the four weeks following Christmas day, Christmas trees will be collected curbside. Trees must be undecorated, unflocked, cut to four-foot lengths with stands removed, and placed curbside next to your green compost cart.
- **ARTIFICIAL TREE VS REAL TREE:**
Be mindful when choosing an artificial tree versus a real tree. Artificial trees are not recyclable or compostable and must be landfilled at the end of their useful life. Reuse your artificial tree for several years and be sure to donate it if you plan to replace it.

UPCOMING EVENTS

- **HOUSEHOLD HAZARDOUS WASTE (HHW) STATION CLOSURES:**
 - » December 24, 2022 for Christmas
 - » December 31, 2022 for New Year's
- **COMPOST WORKSHOP:**
Saturday March 4, 10am - 12pm
Lucie Stern Community Center
1305 Middlefield Rd, Palo Alto
- **WORM COMPOST WORKSHOP:**
Saturday May 6, 10am - 12pm
Lucie Stern Community Center
1305 Middlefield Rd, Palo Alto

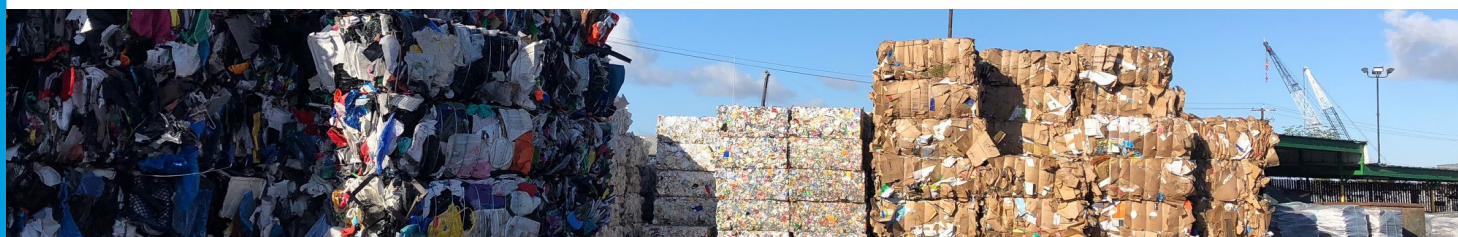
WHERE WILL PALO ALTO'S RECYCLABLES GO?

After a 3 month pilot program in which GreenWaste of Palo Alto and the City of Palo Alto sent mixed paper and mixed rigid plastics to domestic recycling markets, the program is being considered by City Council to extend through fiscal year 2023.

Palo Alto's mixed paper will be sent to Louisiana and its mixed rigid plastics will be sent to southern California for recycling.

In 2021, GreenWaste processed 14,000 tons of Palo Alto's recyclable materials, exporting 100% of the mixed paper and 90% of the mixed rigid plastic collected from the city, as is standard practice for these material types across the industry. Moving forward, 100% of these recyclables will be processed domestically.

The shift to domestic markets was a goal for Palo Alto's City Council and will allow GreenWaste and the City to better track the management of its recyclables. Palo Alto hopes this change will lead other cities to take similar steps and spur an increase in U.S. based recycling facilities that would help decrease the cost of processing these material domestically and increase processing capacity throughout the state and country.



ZERO WASTE HOLIDAYS

'Tis the season for giving, not the season for wasting!

According to the EPA, American households generate 25% more waste during the holidays. When planning your holiday festivities this season consider some of the following zero waste tips:

ALTERNATIVE GIFT WRAPPING

- » Use cloth, newspaper, or reusable bags to wrap your gifts.

SAVE OR SHARE YOUR LEFTOVERS

- » Try the Guestimator for portion planning at www.savethefood.com.
- » Check out the Freestyle Cooking video at www.cityofpaloalto.org/foodwaste to get tips on how to whip up something tasty with whatever you have handy.

DECORATIONS

- » Use reusable or compostable decorations such as pinecones, real foliage, and fruits.

WASTE FREE GIFTS

- » Opt for homemade gifts or give experiences, subscriptions, trips, or services this year instead of a physical gift.



COLLECTION SCHEDULE: HOLIDAY SERVICE DAYS



Good news! There will be no collection day changes this holiday season in Palo Alto.

For Christmas and New Year's Day, there are no collection day changes since both holidays fall on Sundays this year.



Please remember to place your carts at the curb the night before or by 6:00 AM on your regular collection day.

Contact GreenWaste customer service at (650) 493-4894 or pacustomerservice@greenwaste.com if you have collection questions.

Happy recycling and composting!