

# GreenWays

THE QUARTERLY RESIDENTIAL NEWSLETTER FROM GREENWASTE OF PALO ALTO SUMMER 2023

## CREATE SAVINGS FOR BOTH YOUR WALLET AND THE ENVIRONMENT

Making small changes to your daily habits can lead to big savings in household costs and greenhouse gases. Here are some tips to decrease waste, reduce monthly bills, and help the environment:

### REDUCE



- » Purchase items with little to no packaging, refillable, or bulk items.
- » Visit the Zero Waste Living page for waste reduction tips. [www.cityofpaloalto.org/zwliving](http://www.cityofpaloalto.org/zwliving)
- » Optimize food storage, meal planning, and grocery lists. [www.cityofpaloalto.org/foodwaste](http://www.cityofpaloalto.org/foodwaste)

### REUSE



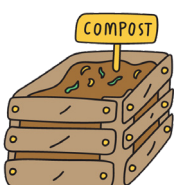
- » Give, donate, or sell reusable items utilizing local reuse organizations and internet resources. Pro tip: repair items to give them a renewed life.
- » Visit the Re:Source tool to find donation or repair vendors. [www.resource.stopwaste.org](http://www.resource.stopwaste.org)

### RECYCLE



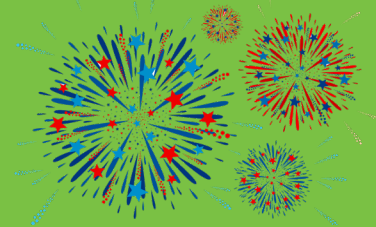
- » Get to know your recyclables better with the Detailed Material Guide and other waste sorting resources. [www.cityofpaloalto.org/wgwtools](http://www.cityofpaloalto.org/wgwtools)
- » Learn how to ensure your recyclables are "Recycle Ready" for collection. [www.cityofpaloalto.org/recycleready](http://www.cityofpaloalto.org/recycleready)

### COMPOST



- » Start your own backyard compost bin for food scraps and yard trimmings. [www.cityofpaloalto.org/compost](http://www.cityofpaloalto.org/compost)
- » Place food scraps and food soiled paper (e.g., pizza boxes, napkins) into your green curbside compost container.
- » Collect compostable items throughout the home including your bathroom. Tissues and paper towels are compostable!
- » Replace wasteful lawns with native plants.

## GREENWASTE HIGHLIGHTS



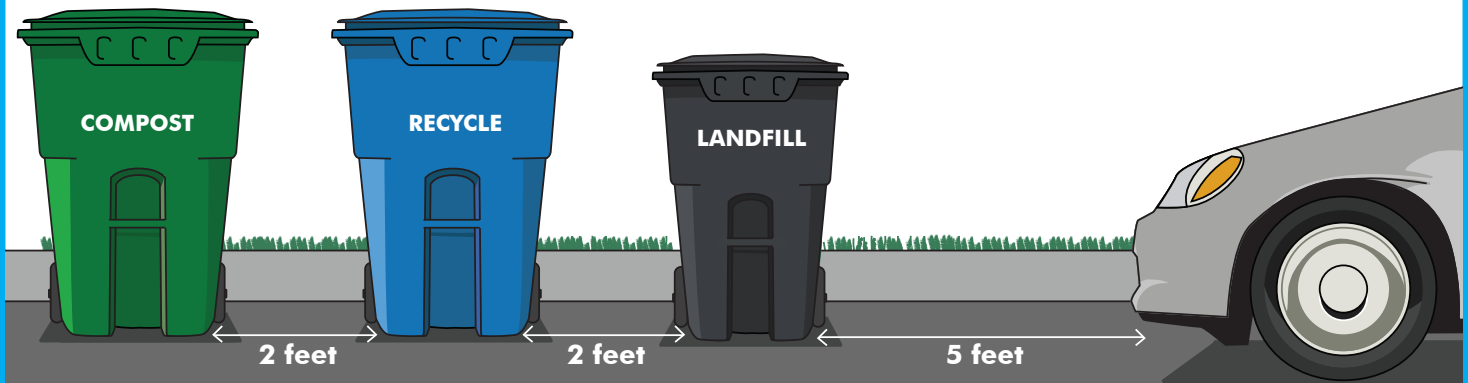
- **REGULAR COLLECTION SERVICE ON INDEPENDENCE DAY:**  
GreenWaste of Palo Alto drivers will be hard at work on the 4th of July. Remember to set your waste containers out by 6am or the day before on your regular service day.

## UPCOMING EVENTS

- **COMPOST BASICS WORKSHOP:**  
Saturday, July 22nd, 10am-12pm  
Lucie Stern Community Center  
1305 Middlefield Rd, Palo Alto
- **COMPOST BASICS WORKSHOP:**  
Saturday, August 5th, 10am-12pm  
Lucie Stern Community Center  
1305 Middlefield Rd, Palo Alto
- **DOCUMENT SHREDDING EVENT:**  
Saturday, August 5th, 9am-12pm  
Baylands Athletic Center, Parking Lot  
1900 Geng Rd, Palo Alto  
[www.cityofpaloalto.org/shred](http://www.cityofpaloalto.org/shred)

# WASTE CART PLACEMENT

Proper cart placement improves waste collection efficiency and reduces safety concerns for our drivers, vehicles, and bicyclists sharing the road.



- » Place carts curbside with the front of the cart facing the street the day before or by 6:00am on collection day.
- » Allow minimum of 2 feet between carts.
- » Allow minimum of 5 feet distance from cars and other obstructions.
- » Keep carts clear from bike lanes.
- » Keep all materials inside the carts with lids closed.
- » Carts must be removed from the street or sidewalk within 24 hours after collection.



## INTERVIEW WITH A DRIVER: JOSE RUIZ

Jose has served the Palo Alto Community for almost 30 years and has the unique experience of driving GreenWaste's all electric fully automated side loader and he enjoys showing it off throughout the community.

Jose's fellow GreenWaste drivers are the favorite part of his job. They make the day go by quickly and he can always count on them. The most challenging part of his job is consistently dealing with the day to day traffic.



Like all of us at GreenWaste of Palo Alto, Jose has been impressed with the industry advancements to collection vehicles and is excited for the future. He enjoys driving the electric truck especially because it's quieter and does not produce the smell of diesel fumes. Jose's truck saves around 6,000 gallons of diesel fuel per year and reduces emissions by around 78 metric tons of carbon dioxide equivalents annually. The mechanical and technological improvements to vehicles have assisted him with improving his overall efficiency and safety.

As an electric truck driver, Jose gets the opportunity to showcase his vehicle at schools throughout the year. It is always a special experience for him to witness the students' excitement and reaction to the truck in action. He greatly appreciates his job and is thankful to GreenWaste of Palo Alto and the Palo Alto community for his time as a driver and looks forward to more years to come.

## CARE FOR YOUR COMPOST CONTAINER

Follow these tips to take care of your compost containers and maintain a pleasant home:

### Internal Compost Container

- » Use a container with a lid that is easy to empty.
- » Line the with a BPI-certified compostable bag, newspaper, or paper bag to reduce mess.
- » Empty, rinse out, and scrub with soap regularly.
- » Store in a cool spot to reduce the odor, for example in your freezer.
- » Drain liquids from food scraps before putting them in the container.
- » Add baking soda or coffee grounds on top of material to reduce odor.



### External Compost Container

- » Line with leaves and yard trimmings prior to placing food scraps inside.
- » Store in the shade and keep the lid closed to reduce odor during high temperatures.
- » Wash with soap and water regularly or contact GreenWaste of Palo Alto customer service to schedule a cart wash for a fee.

